

Perimeter Wire Splicing

The perimeter wire need to be spliced in the following cases:

1. If additional wire is required in order to complete the initial set-up.
2. Changes done in the lawn.
3. Cut wire.

To splice two wires follow the instructions below:

1. Use the connectors supplied in the box, as shown in the figures below; they are waterproof and provide reliable electrical connection.
2. Strip ½ inch (1.5cm) of each wire end (Figure 1 – step 1).
3. Twist the stripped ends together (Figure 1 – step 2).
4. Screw the silicone filled wire nut on the twisted ends until it stops turning (figure 1 – step 3).

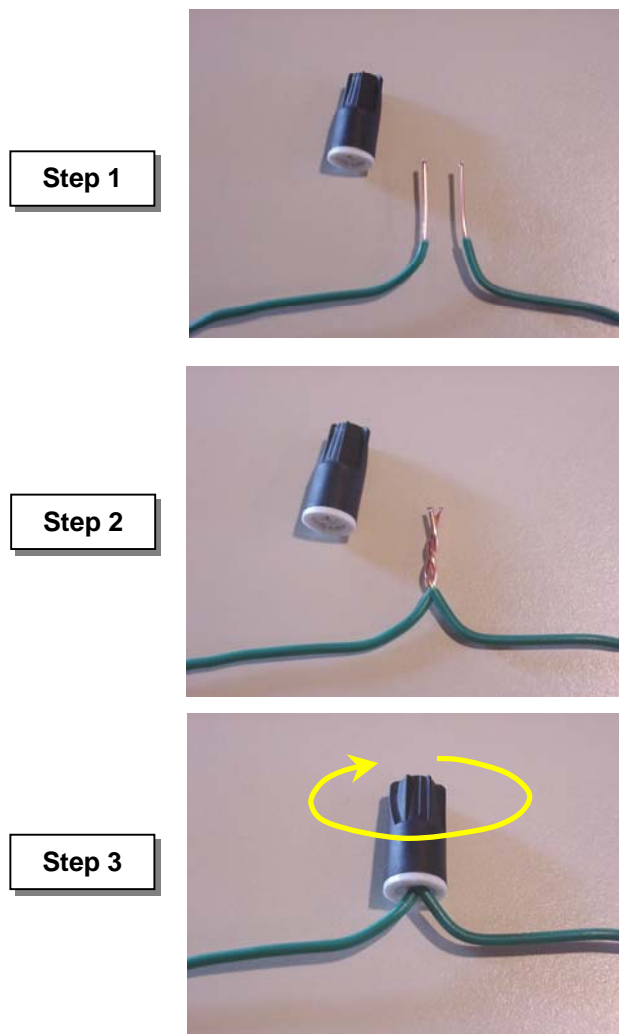


Figure 1 – Splicing the perimeter Wire

Important Information!

Twisted cables, or a screw terminal insulated with insulation tape is not a satisfactory splice. Soil moisture will cause the conductors to oxidize and after a while result in broken circuit.